

IP-COM

G3350F

48GE+2SFP Cloud Managed Switch

G3350F

48GE+2SFP Cloud Managed Switch

Descriptions

G3350F is a 48GE+2SFP layer-2 cloud managed switch designed by IP-COM for such scenarios with dense network as office network of SMBs and computer room network of campuses. With 48*10/100/1000 Base-T Ethernet ports and 2*1000 Base-X SFP ports, the switch supports cloud platform management, remote App management and local visualization, realizing easy and efficient network maintenance at a lower cost.



Features

- Compliant with IEEE 802.3, IEEE 802.3u, IEEE 802.3ab, IEEE 802.3ad, IEEE 802.3z, IEEE 802.3x, IEEE 802.1p, IEEE 802.1q, IEEE 802.1w, IEEE 802.1d and IEEE 802.1s.
- 48*10/100/1000 Base-T Ethernet ports, 2*1000 Base-X SFP ports (independent)
- 16 K MAC address table and MAC address auto learning
- 12 Mb large buffer
- Support such services as VLAN, IGMP, QoS, ACL, DHCP Snooping and Telnet
- Support Cloud web management, CloudFi App management and local visualization management

USPs



Cloud Management

The switch supports web management, configuration and maintenance through IP-COM Cloud web platform, including such functions as fault detection, log reporting and network status monitoring, ensuring stable operation of the network.



APP Management

Scan the QR code to add the switch to the CloudFi App for cloud management. Then, you can use such functions as VLAN configuration, DHCP snooping and loop guard on the App, making operation and maintenance easier.



Topology Visualization

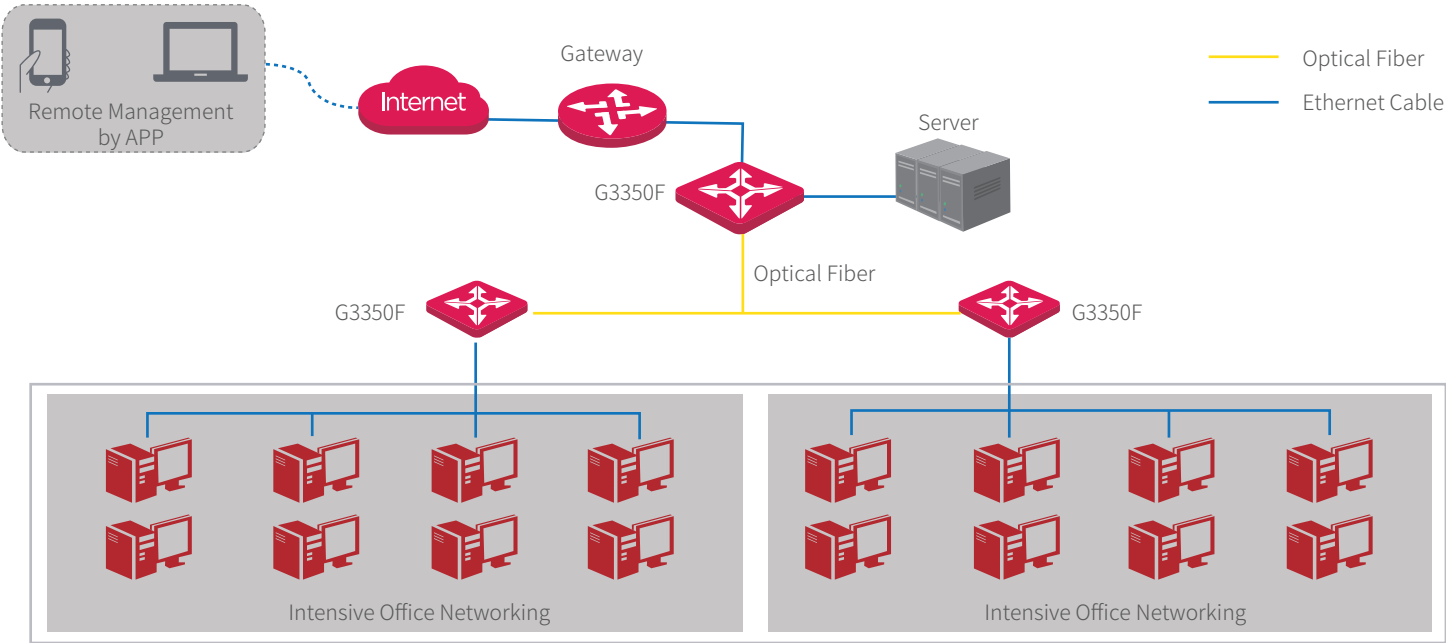
The system can generate a network topology automatically. It supports IP camera discovery based on ONVIF protocol and network device discovery based on LLDP, as well as online/offline status detection for all devices in the network, which improves the LAN operation and maintenance efficiency and also reduces the maintenance cost.



Dual-image Backup

The switch supports dual-image backup, ensuring stable operation and improving stability.

Typical Scenario



Specifications

Product Model	G3350F
Hardware Specifications	
Network Standards	IEEE802.3、IEEE802.3u、IEEE802.3ab、IEEE802.3z、IEEE802.3x、IEEE802.1p、IEEE802.1q、IEEE802.1w、IEEE802.1d、IEEE802.1s
LED Indicators	One Link/Act LED indicator for each port One Power LED indicator One SYS LED indicator
Ports	48*10/100/1000 Base-T Ethernet ports 2*1000 Base-X SFP ports
Lightning Protection	≥6KV
Forwarding Mode	Store-and-forward
MAC Address Table	16K
Input Voltage	100-240V AC 50/60Hz
Dimensions (L*W*H)	440*240*44mm
Total Power Consumption	Total power consumption: <48 W
Environment	Operating temperature: 0°C - 45°C Storage temperature: -40°C - 70°C Operating humidity: (10% - 90%) RH, non-condensing Storage humidity: (5% - 90%) RH, non-condensing
Certificates	CCC、FCC、CE、RoHS
Software Features	
Security Features	Support ARP receiving limit Support discarding unknown MAC addresses Support DoS attack defense Support 802.1x security authentication Support RADIUS authentication
VLAN	Support 4 K VLAN table Support IEEE 802.1q VLAN Support three port modes: Access, Trunk and Hybrid

Software Features	
DHCP	<ul style="list-style-type: none"> Support DHCP snooping Support Option 82 policy configuration
Port Aggregation	<ul style="list-style-type: none"> Support static aggregation Support LACP dynamic aggregation
STP (Spanning Tree Protocol)	<ul style="list-style-type: none"> Support IEEE 802.1d STP (Spanning Tree Protocol) Support IEEE 802.1w RSTP (Rapid Spanning Tree Protocol) Support IEEE 802.1s MSTP (Multiple Spanning Tree Protocol) Support edge ports Support BPDU statistics
Multicast	<ul style="list-style-type: none"> Support IGMP snooping V1/V2/V3 Support fast leave of ports
Port Mirroring	<ul style="list-style-type: none"> Support N:1 port mirroring
QoS	<ul style="list-style-type: none"> Support SP (Strict Priority) Support SWRR (Simple Weighted Round Robin) Support WRR (Weighted Round Robin) Support 802.1p port trust mode Support DSCP port trust mode Support a maximum of 8-queue service quality mapping
Cloud Management	<ul style="list-style-type: none"> Support configuration delivery from Cloud web platform Support CloudFi App management Support log reporting and fault detection Support remote maintenance: reboot, backup, upgrade
Local Visualization	<ul style="list-style-type: none"> Support discovery of such network devices as routers, switches, APs based on LLDP Support IP camera discovery based on ONVIF protocol Support automatic generation of topology Support local view and main view Support online/offline status detection for devices Support remote IP cameras reboot Support loop alert Support custom device types and device names
ACL	<ul style="list-style-type: none"> Support MAC ACL Support IPv4 ACL

Software Features

Loading and Upgrade

- Support FTP/TFTP/HTTP upgrade
- Support configuration import and export

Management and Maintenance

- Support Telnet configuration
- Support SNMP V1/V2/V3
- Support web management and maintenance
- Support system log
- Support log classification
- Support NTP
- Support Ping and Tracert tests
- Support memory and CPU monitoring

IP-COM
World Wide Wireless

IP-COM NETWORKS CO., LTD.

Tower E3, No.1001, Zhongshanyuan Road,
Nanshan District, Shenzhen, China. 518052
Service: info@ip-com.com.cn
Inquiry: marketing@ip-com.com.cn
Tel: +86-755-27653089

Specifications are subject to change without notice. Copyright ©2021 IP-COM Networks Co., Ltd. All Rights Reserved. IP-COM is the trademark of IP-COM Networks Co., Ltd. All other brand names mentioned herein are the trademark or registered trademarks of their respective holders.